



 CCIG



ENIM

MOBILUS

# EVM BROCHURE



# CONTENTS

01 Company Profile

02 R&D and Production

03 Commercial Vehicles

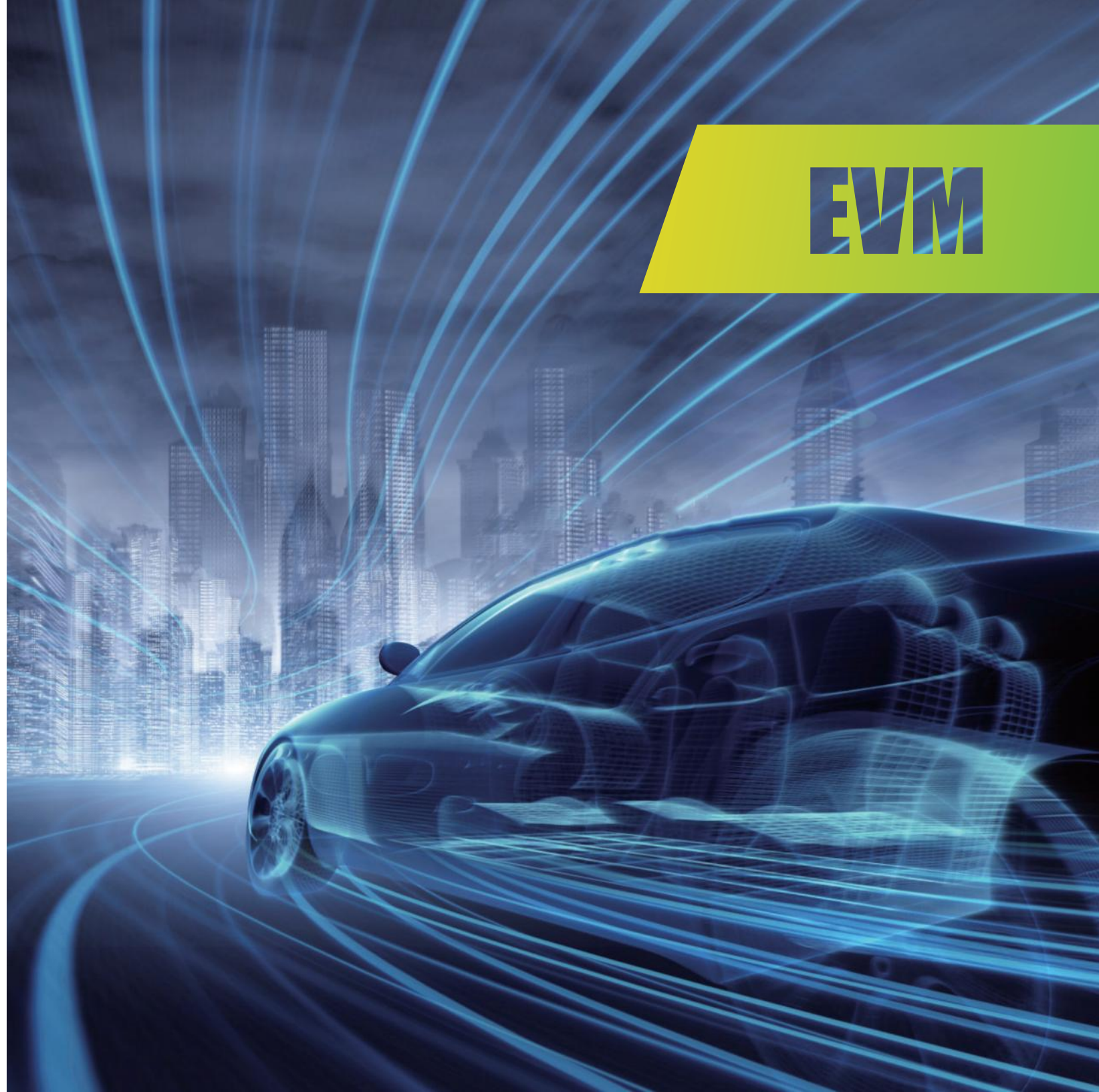
04 Special Vehicles

05 Smart Living Capsule

06 Intelligent System

07 Spare Parts

# EVM



# COMPANY PROFILE

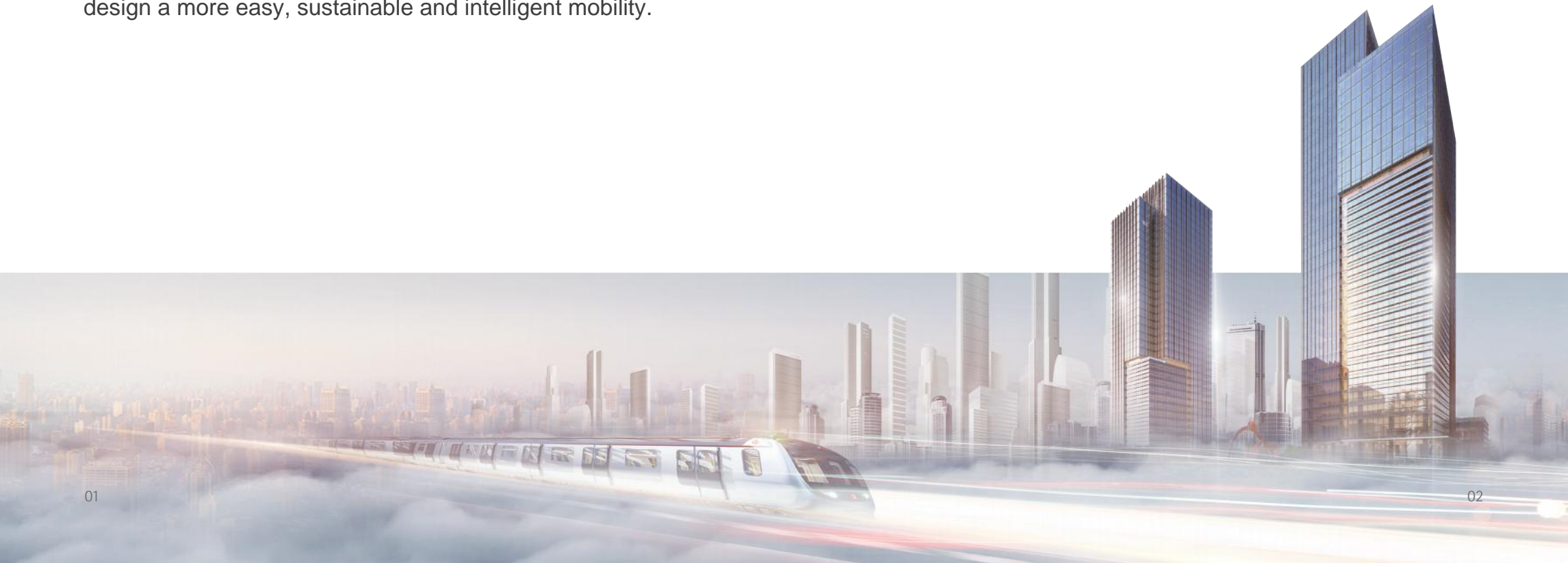
EVM is a global leader in delivering customized solutions for new energy mobility and sustainable living, specializing in innovative production and eco-friendly technologies. EVM focuses into design, R&D, global supply chain integration and manufacturing consultancy meeting the rapidly growing demand of customized products. The vision of EVM is to design a more easy, sustainable and intelligent mobility.

## Governance

Established by skilled global professionals who have been working in the mobility and industrial market in the international scenario for a long time. Our Management model follows the world evolution enhancing partnerships to drive sustainable transport supply chain and innovation.

## Vision and Mission

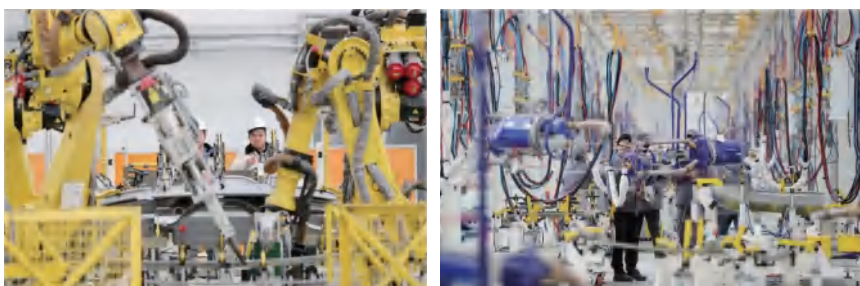
Our vision sets a long term goal for the company and provides us with a roadmap that defines our mission to set up an intelligent, accessible and sustainable mobility ecosystem.



## R&D AND PRODUCTION

### AUTOMATIC WELDING PRODUCTION LINE

Our factory has the fourth generation automatic welding and assembly production line of commercial vehicles, equipped with over 40 high-end specialized equipment, over 30 sets of tooling fixtures, and an annual production capacity of over 3000 units.



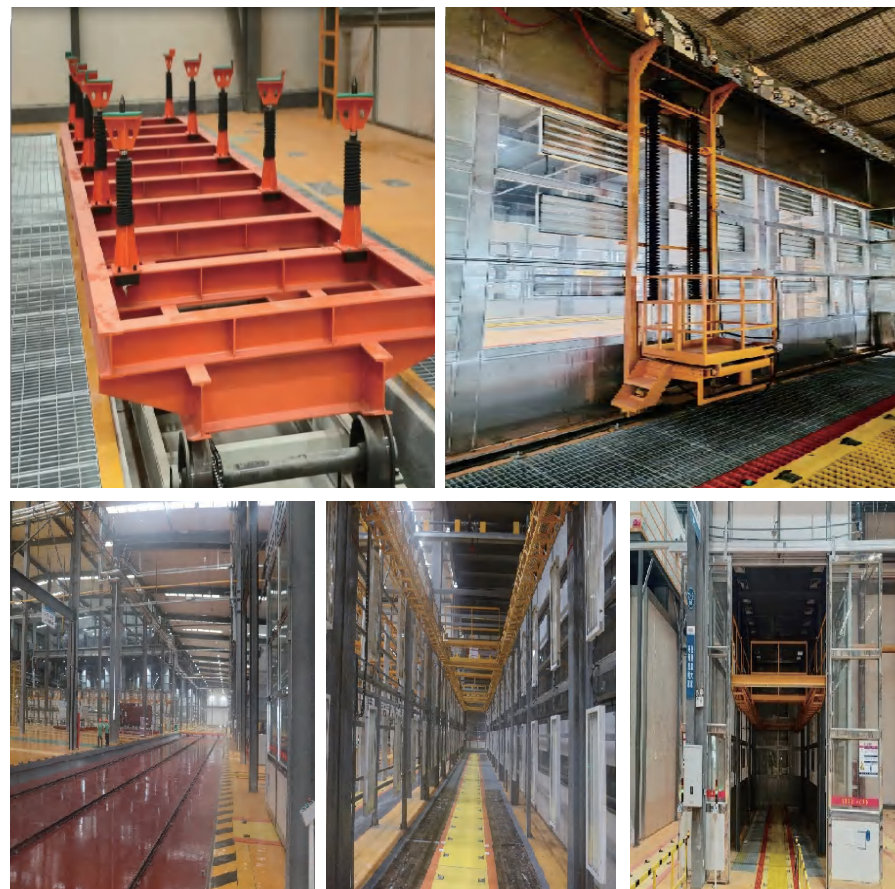
### INTELLIGENT COATING PRODUCTION LINE

With the largest electrophoretic line in Zhejiang Province (electrophoretic body up to 13.7m) China, the coating process is complete, highly automated, and highly informative, far surpassing the mainstream coating line for similar domestic products.



### FLEXIBLE ASSEMBLY PRODUCTION LINE

The production processes include chassis sub assembly, hydraulic assistance, electrical, body assembly, and full vehicle commissioning. It includes more than 100 sets of advanced equipment such as fully automatic transfer machines, AGV fully automatic transport vehicles, quantitative filling machines, and power grid frames.



## R&D AND PRODUCTION

### MANUFACTURING WORKSHOP



#### PAINTING ADVANTAGE

The paint mist removal rate of hydro-cyclone spray booth can reach more than 98%;



#### HIGH QUALITY ELECTROPHORESIS

Full-automatic pass-through electro-phoresis, pre-treatment and chemicals adopt international first-class brands.



### MANUFACTURING BASE



#### SUIZHOU, CHINA (CHUSHENG GROUP)

Location: Suizhou, China

Area: 700,000 sqm

Employees: ~1,000

Products:

Specialized vehicles (fire trucks, pressure vessels, etc.)

Capacity: 20,000 vehicles/year

Certifications:

National high-tech, defense equipment, 30+ patents



#### ZHUCHENG, CHINA (ZHUCHENG SPECIAL VEHICLE GROUP)

Location: Zhucheng, China

Area: 250,000 sqm (Phase I)

Focus: High-end specialized vehicles, military products

Advantage: BAIC chassis collaboration, industrial cluster



#### DEQING, CHINA (QIHANG AUTOMOBILE)

Location: Deqing, China

Area: 328,000 sqm

Products: Commercial sedans, electric buses, engineering vehicles

Capacity: 16,000 vehicles/year



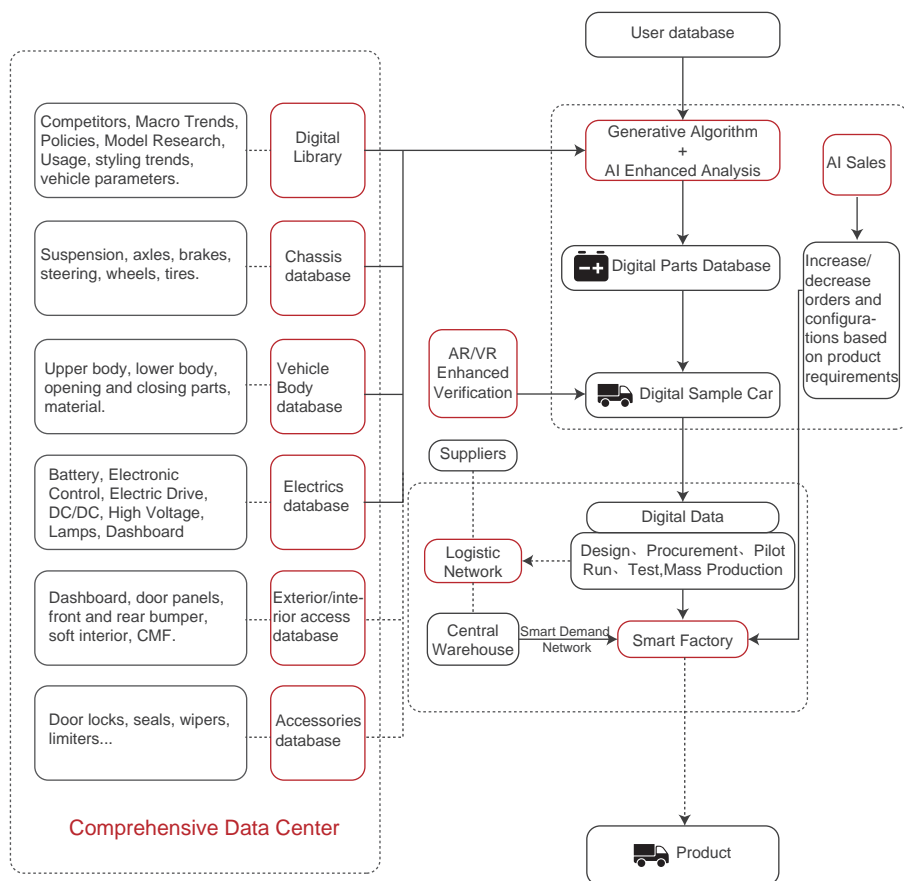
#### JOHOR, MALAYSIA (SUN BUS TECH)

Location: Johor-Singapore SEZ

Focus: Bus manufacturing (conventional & electric)

Vision: Smart, sustainable transportation solutions

# CORE TECHNOLOGY AND SUPPLY CHAIN



## Powertrain system

### Core self-research results

- ✓ Battery: Thermal management system based on data-driven MPC
- ✓ Electric drive: Integrated electric drive bridge
- ✓ Electronic control: Power domain control system

### Key strategic partner

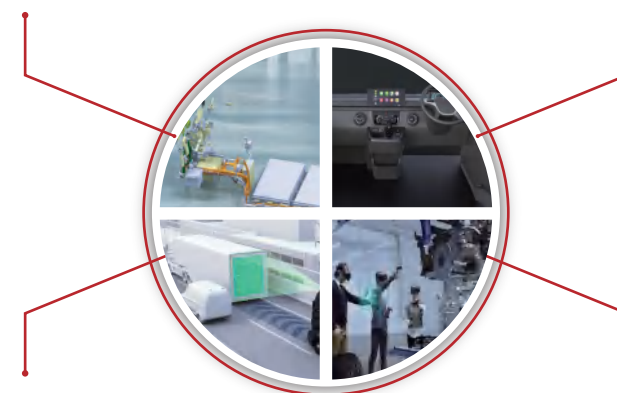


## Digital Cockpit

### Core self-research results

- ✓ Safety protection: CMS rearview mirror, round view, blind area monitoring
- ✓ Intelligent interaction: Vital signs detection, movable integrated operation table

### Key strategic partner

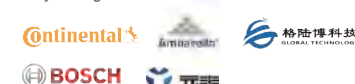


## Assisted driving

### Core Self-research Results

- ✓ Perception algorithms: Driving assistance algorithms based on productivity requirements

### Key Strategic Partner



## Vehicle structure

### Core Self-research Results

- ✓ Structural safety: Ring body structure to meet rollover requirements
- ✓ Convenient and comfortable: Low floor, through type
- ✓ EU vehicle certification requirements

### Key Strategic Partner



Vehicle platform: combined with various technical advantages, self-developed with high scalability, high safety, high intelligence vehicle platform

Strong core technology self-research ability; Strong "self-research + cooperation" integration ability; Create high-quality intelligent productivity vehicles for users

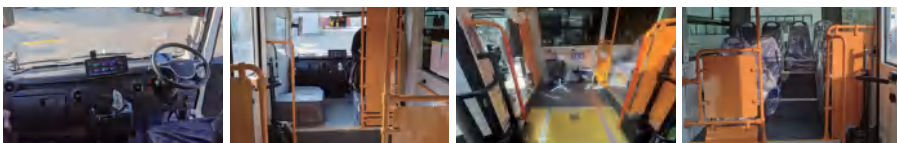
# COMMERCIAL VEHICLES



# ELECTRIC PASSENGER VAN

## EB01 ELECTRIC LIGHT PASSENGER VAN

The EB01 Electric Light Passenger VAN is a medium-sized passenger vehicle targeting high-end government and commercial markets, ideal for official/business travel, airport transfers, scenic area commutes, corporate shuttles, and more. Featuring a newly designed exterior and an in-house developed fully electric chassis, it delivers excellent maneuverability and extended range.



## PERFORMANCE

SPECIAL  
CHASSIS

POWERFUL  
PERFORMANCE

CLEVER  
LAYOUT

STRUCTURAL  
SAFETY

SEDAN-STYLE  
CENTRAL CONTROL

EXQUISITE  
INTERIOR

## Configuration Selection Table

Basic Parameter	Dimension (L x W x H) (mm)	5380×1900×2690
	Wheel Base(mm)	3130
	Front/Rear Overhang(mm)	1200/1050
	Approach / Departure Angle	12.5/12.5
	Min. Ground Clearance(mm)	≥120
	Curb Weight (including battery) (kg)	3900
	Number of Seat	1 Driver's seat+2 Folding seats+7 Passenger seats
Battery	Gross Vehicle Weight (kg)	4650
	Type of Battery	LFP
	Rated Voltage (V)	608.58
	Capacity (kWh)	105.3
	Charging time(Fast Charging) (h)	<2
Power Train	Range WLTC driving cycle (km)	200
	Type of Motor	Permanent Magnet Synchronous Motor"
	Protection Class	IP67
	Insulation Class	H
	Rated Power / Peak Power (kW)	40/100
	Max. Torque (N·m)	270
	Driving Type	Rear motor rear Wheel Drive
	Braking Energy Recovery	●
	Top Speed (km/h)	90
	Max. Gradeability (%)	≥25
Chassis	Front suspension	Air Suspension
	Rear suspension	Air Suspension
	Brake	Front: Disc hydraulic, Rear: Disc Hydraulic
	Assist Type of Braking	Electric Assist
	Parking Brake	Electronic Park Brake
	Steering	Electric Assist
	Tire	215/75R16LT
	Wheel(Rim)	Aluminum Alloy
	Electronic-controlled air suspension	ECAS(with side kneeling function)

●: Standard configuration ○: Optional configuration —: Not Equipped

# ELECTRIC LOGISTIC VAN 5T / 3.5T

## KEY FEATURES

Purpose-Built Design: Optimized for logistics operations

Core Technology:

1. Self-developed all-electric chassis
2. Extended-range battery system

Functional Advantages:

1. Low-floor design for effortless loading/unloading
2. High cargo volume utilization & payload capacity

Smart Features:

1. Integrated driver assistance system
2. Intuitive intelligent controls

Key Benefit: Safe, efficient last-mile delivery solution



5T



Carbin: 3920×1680×2100mm



Side door: 1030×1790mm



Back door: 1280×1820mm

3.5T



Carbin: 3420×1680×2100mm



Side door: 1030×1790mm



Back door: 1280×1820mm

## Basic Parameters

Basic Parameter	Dimension (L x W x H) (mm)	5900×1900×2650
	Front/Rear Wheel Track (mm)	1657/1677
	Wheel Base (mm)	3650(5T) / 3130(3.5T)
	Front/Rear Overhang(mm)	1200/1050
	Approach / Departure Angle (°)	15/13.8
	Min. Ground Clearance (mm)	≥162
	Min. Turning Radius (m)	≤7(5T) / ≤6(3.5T)
	Curb Weight (Including Battery) (kg)	3100(5T) / 2600(3.5T)
	Number of Seat	2
	Gross Vehicle Weight (kg)	5000(5T) / 3500(3.5T)
Battery	Type of Battery	LFP
	Rated Voltage (V)	524.8(5T) / 396.8(3.5T)
	Capacity (kWh)	78.72(5T) / 59.52(3.5T)
	Charging time (h)	< 3
	Range 25 °C (km)	200
Power Train	Type of Motor	Permanent Magnet Synchronous Motor
	Protection Class	IP67
	Insulation Class	H
	Rated Power / Peak Power (kW)	60/120(5T) / 50/100(3.5T)
	Max. Torque (N·m)	360(5T) / 300(3.5T)
	Driving Type	Front Motor Front Wheel Drive
	Top Speed (km/h)	90
	Max. Gradeability (%)	≥23(5T) / ≥25(3.5T)
	Gear Ratio	12.9
	Braking Energy Recovery	•
Chassis	Front suspension	Double Wishbone Independent Suspension
	Rear suspension	Leaf Spring
	Brake	Front: Disc hydraulic, Rear: Disc Hydraulic
	Assist Type of Braking	Electric Assist"
	Parking Brake	Electronic Park Brake
	Steering	Electric Assist"
	Tire	215/75R16LT
	Wheel(Rim)	Aluminum Alloy

●: Standard configuration ○: Optional configuration —: Not Equipped

# ELECTRIC LOGISTIC TRUCK

## KEY FEATURES

Regional Optimization:

- 1.Designed for Southeast Asia's hot/rainy climate & RHD markets
- 2.Adapts to complex road conditions

Versatile Applications:

- 1.Urban last-mile delivery
- 2.Agricultural & SME logistics

Core Advantages:

- 1.Climate-resistant electric drivetrain
- 2.Cost-efficient operation
- 3.High reliability for green transport



## PERFORMANCE

### HIGH-EFFICIENCY THREE-ELECTRIC SYSTEM

Equipped with a 41.93 kWh lithium iron phosphate (LiFePO4) battery pack, adapted for tropical high-temperature environments. Liquid-cooled thermal management system ensures stable battery operation even above 40 ° C, delivering a comprehensive range of 220 km to meet daily urban delivery demands in Southeast Asia.

### POWERFUL PERFORMANCE

70 kW peak power motor with a maximum torque of 225 N·m effortlessly handles full-load hill climbs and frequent start-stop scenarios. Rated load capacity of 1 ton, compatible with diverse cargo types including produce, construction materials, and daily goods.

### FLEXIBLE DRIVER CABIN LAYOUT

Customized right-hand-drive (RHD) configuration for markets like Malaysia and Thailand. 1600mm-wide cabin with optional single/double cab configurations. The dual-cab version accommodates 5 passengers, balancing passenger and cargo needs.

## ENHANCED ROAD ADAPTABILITY

Ground clearance increased to 180mm.  
Front MacPherson independent suspension + rear leaf spring suspension.  
195/65R15T high-load tires for navigating both rural unpaved roads and congested urban routes.

## OPTIMIZED OPERATIONAL COSTS

Energy consumption of ~18 kWh per 100 km, slashing daily operational costs by over 60% compared to fuel vehicles.  
Eliminates traditional fuel systems, reducing maintenance frequency (e.g., oil and filter changes), lowering lifecycle costs.

Basic Parameters				
Item		Parameters		Remark
Dimensions parameters	Overall dimensions	L (mm)	4500	
		W (mm)	1655	
		H (mm)	1965	
	Cargo case dimensions	L (mm)	2570	reference
		W (mm)	1590	
		H (mm)	330	Sideboards
	Wheelbase (mm)		2900	
	Overhang	Front(mm)	525	
		Rear(mm)	1075	
Loading parameters	Wheel Track (mm)	Front	1450	
		Rear	1435	
	Curb weight(kg)		1400	reference
Performance parameters	Total mass (kg)		2570	
	Top speed (km/h)		90	
	Minimum turning diameter(m)		10	
	Maximum climbing gradient(≥)		20%	
	Maximum gradeability(≥)		20%	
Power battery parameter	NEDC operating condition range (km)		220	
	Battery pack capacity (kWh)		41.93	Single row
Motor parameter	Number of battery boxes		1	
	Rated/Peak Power (Kw)		35/70	
	Motor drive type		Rear axle direct drive	
	Motor protection rating		IP67	
	Drive motor cooling method		Liquid Cooling	

# ELECTRIC LOGISTIC MINI TRUCK

## ET07

The Electric Logistic Mini E-Truck is a commercial logistics vehicle model specially designed for the last mile of urban areas. The whole truck adopts a modular structure design, with the characteristics of small vehicle size and large capacity, which is convenient for driving in urban alleys, with a pure electric range of 100+ km to meet the needs of short-distance delivery in cities.



## PERFORMANCE

STRONG PASSABILITY

STABILITY

SAFETY

LOADING

COMFORTABLE DRIVING

## Basic Parameters

Item	Detail	Parameter	Remark
Basic Parameters	Length x Width x Height (mm)	3685×1200×1935	
	Maximum Speed (km/h)	71	
	Cargo Volume (m³)	2.85	Inner Dimensions: 1970×1160×1250 Cargo box type/material: Van/flat iron box
	CLTC-C Range (km)	112	
	Wheelbase (mm)	2200	
	Front/Rear Overhang (mm)	400/1085	
	Number of Axles	400/1085	
	Curb Weight (kg)	700	
	Gross Vehicle Weight (kg)	1400	
	Payload (including passengers) (kg)	700	
	Maximum Gradeability (%)	15	
Powertrain system	Battery Type	LFP	Ganfeng LiEnergy
	Battery Capacity (kWh)	10.36	Ganfeng LiEnergy
	Motor Rated Power (kW)	10	
	Motor Peak Power (kW)	20	
	Motor Rated Torque (N.m)	25	
	Motor Peak Torque (N.m)	85	
	Motor Type	PMSM	
Chassis system	Charger Power (kW)	2.2	
	Front Suspension	MacPherson Independent Suspension	
	Rear Suspension	Leaf Spring Non-Independent Suspension	
	Brake Type	Front Disc, Rear Drum	
	Brake Assist	Vacuum Assist	
	Drive System	Rear Engine, Rear-Wheel Drive	
	Parking Brake Type	Handbrake Cable	
	Steering Type	Mechanical	
	Tires	135/70R12/145R12LT 8PR	
	Rims	4.00B	Steel

●: Standard configuration ○: Optional configuration —: Not Equipped

## PASSENGER VEHICLE SERIES-EB02/EB03

### KEY FEATURES

Product Overview: New-generation compact electric city bus

Core Technology:

1. Proprietary electric chassis
2. Air suspension for superior ride comfort

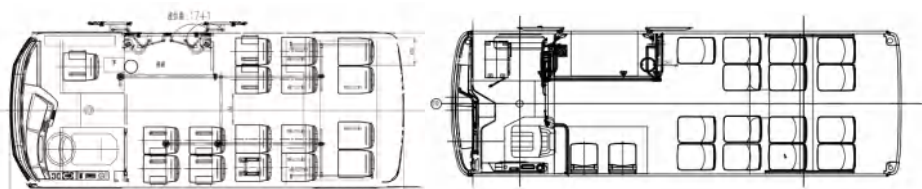
Design Highlights:

1. Low-floor layout + sliding pneumatic doors
2. Optimized interior space efficiency

Performance & Intelligence:

1. Extended driving range
2. Intelligent driver assistance & control systems

Key Advantage: Safe, efficient urban mobility solution



### PERFORMANCE

SPECIAL  
CHASSIS

POWERFUL  
PERFORMANCE

HIGH SPACE  
UTILIZATION

EXQUISITE  
INTERIOR

### Configuration Selection Table

Vehicle parameters	Structure	self-supported, low entrance
	Dimension (mm)	6005X2060X2920(EB02) 6990X2350X3140(EB03)
	Wheelbase (mm)	4360(EB02) / 5100(EB03)
	Front/Rear Overhang(mm)	1090/800
	Type of fuel	Pure Electric
	Approach/Departure Angle (°)	17/25
	Gradeability (%)	≥20%(EB02) / ≥15% (EB03)
	Minimum Ground Clearance (mm)	≥170
	Curb weight (kg)	6000(EB02) / 6600 (EB03)
	G.V.W (kg)	8800(EB02) / 9800 (EB03)
	Max speed (km/h)	70
	seats	37/17+1(EB02) / 48/17+1 (EB03)
Power Train	Electric Motor	driving axle Rated/maximumpower: 110/220kW Rated/maximumpower: 230/460N.m
	Power Battery System	91kWh(EB02) / 141kWh, 4C, 228Ah, 618.24V cooling method: liquid cooling
	Battery cooling system	Air conditioning integration
	All-in-one controller	five-in-one
	charger	1*CCS Combo2
Chassis	Front Axle	Rigid bridges, Disc brake
	Rear Axle	eAxle, Double Tires, Disc Brake
	Maintenance-free wheel ends (front/rear)	Included
	Suspension Type	Leaf springs
	Tyres	215/75R17.5
	rim	17.5X6.00 aluminum alloy rim
	Electric air compressor	Oil-free Scroll Air Compressor
	ABS	ABS

## LOGISTIC VEHICLE SERIES-ET08/ET09

### EVOLUTION OF COMMERCIAL E-MOBILITY

The development of bonnet frame goes beyond the issue of regulatory compliance and is at the core of ensuring the safety of passengers in case of frontal collision. The bonnet frame of IR3/IR5, equipped with LED headlamp and the signature charging indicator with position lamp, is an innovative technology of ET08, the leader in commercial EV market.



ET08

ET09



Driver's seat airbag

Double-dock for mobile phones  
(wireless charging supported)

HDC(hill descent control)

### Configuration Selection Table

Basic Dimension			
Cabin	Type		SEAT
Exterior dimensions(mm)	Length		4570(ET08) / 4080(ET09)
	Width		1695
	Height		1943
Wheel Base (mm)	2820(ET08) / 2650(ET09)		
Over Hang(mm)	FRT		653
	RR		1097(ET08) / 777(ET09)
Tread(mm)	FRT		1470
	RR		1470
Cargo box (inside)(mm)	Length		2420(ET08) / 1760(ET09)
	Width		807(ET08) / 688(ET09)
	Height		450(ET08) / 475(ET09)
Weight (kg)	Curb Weight		1700(ET08) / 1500(ET09)
	Pay Load		1000(ET08) / 500(ET09)
	Max. Gross Weight		2850(ET08) / 2150(ET09)
Minimum Ground Clearance (mm)			200 / 180
Performance			
Max. Speed (km/h)			120km/h
Max. Gradeability			≥30%
Driving Range	NEDC(Endurance Mileage) (km)		≥280(ET08) / ≥300(ET09)
Drive Type	4×2		
Motor	Power (kW)	Max.	108
		Rated	55
	Torque (Nm)	Max.	272
		Rated	110
Re-Generative Brake	Re-Generative Brake		●
Power Battery	Battery Type		LFP
	Capacity(kWh)		63
	Charging Time	Slow(h)	≤5
		Quick(Min)	≤30
	Battery Cooling		Water
TMS		●	
Chassiss			
Frame	Frame		●
Suspension System	FRT Suspension		MacPherson
	RR Suspension		Leaf Spring"
	Shockabsobar		●
	FRT Stabilizer Bar		●
Wheel & Tire	Tire		185/R14LT-8PR
	Rim Material		Steel
Steering System	Steel Wheel Cover(Full Size)		●
	Electric Power Steering		●
Brake System	Front Brake Type		(Disc)
	Rear Brake Type		(Disc)
	Brake Booster		ElectroHydraulic
	Parking Brake Type		Electronic
Drive Model	Rear Drive		●
●: Standard configuration ○: Optional configuration —: Not Equipped			

●: Standard configuration ○: Optional configuration —: Not Equipped

# SPECIAL VEHICLES



## PICKUP CAMPER

### ADVANTAGES OF PICKUP CHASSIS

Based on Ford, Sinotruk and other models, it has strong carrying capacity and can carry heavy objects to meet camping needs. Excellent off-road performance, high ground clearance, easy to pass complex road conditions, such as muddy and rugged roads.

### ADAPTABILITY AND SELECTIVITY

A variety of pickup models are compatible, and car owners have a wide range of choices. Different brands of pickups have different performance and configurations, which can be selected according to needs and budget.

### CHASSIS MODIFICATION POTENTIAL

The chassis can be modified to improve suspension performance and enhance vehicle passability and stability. Additional storage boxes and tool racks can be installed to increase the practicality and functionality of the vehicle.

### LIVING CABIN



INTEGRATED AND DETACH-  
ABLE CAMPING PODS



INTERNAL  
FUNCTIONAL DIVISION

SPACE UTILIZATION  
AND EXPANSION

### EQUIPMENT SYSTEM

WATER AND ELECTRICITY  
SUPPLY SYSTEM

BATHROOM AND AIR  
CONDITIONING SYSTEM

SYSTEM INTEGRATION  
AND INTELLIGENCE



## APPLICABLE SCENARIOS

### LONG DISTANCE DRIVING



#### ROAD TRIP ROUTE

Suitable for long-distance self-driving routes. The vehicle has a strong endurance and can be refueled along the way, so there is no need to worry about endurance issues.

### OFF-ROAD ADVENTURE



#### DRIVING ON UNPAVED ROADS

The off-road performance is excellent and can easily cope with complex road conditions such as mountains, deserts, and jungles. The vehicle has strong passability and stability to ensure driving safety.

### SHORT TRIP CAMPING

SUBURBAN CAMPING

FAMILY OUTING

# 40FT THREE-AXLE CONTAINER TRANSPORT SEMI-TRAILER

## KEY FEATURES

Product Overview: Next-generation container transport semi-trailer

Design & Technology:

1. Novel structure, advanced manufacturing
2. Low center of gravity for stability

Adaptability:

1. Complies with standardization while optimizing for regional road conditions
2. Enhanced design for diverse operational needs

Market Reception:

1. Trusted by customers for superior performance
2. High user satisfaction



## MAIN FEATURES

NOVEL DESIGN  
CONCEPT

HIGH-STRENGTH  
STEEL PRODUCTION

SMART MANUFACTURING

ELECTROSTATIC POWDER  
SPRAYING PROCESS

## Main Technical Parameters

Overall dimensions of the vehicle (length x width x height) (mm)	12500x2500x1570
Total mass	40000 (kg)
Curb Weight	6400 (kg)
Rated load capacity	33600 (kg)
Wheelbase (mm)	7500+1310+1310
Front overhang/rear overhang (mm)	940/1340
Leaf spring	-/4/4/4; -/8/8/8; -/10/10/10
Rear track (mm)	1840/1840/1840
Tire specifications	12R22.5 12PR++ 11.00R20 12PR++
Tire quantity	12
Steel ring specifications	22.5x9
Number of steel rings	12
Number of locks	4 spring-loaded corner locks; 8 locks optional; 12 locks optional; 12 locks with small platform optional

## MORE PRODUCTS



20FT CONTAINER  
TRANSPORT SEMI-TRAILER



45FT CONTAINER  
TRANSPORT SEMI-TRAILER



MAINTENANCE AND  
MODIFICATION OF VAN SERIES



ROLLOVER DUMP  
TRUCK SERIES



STAKE  
TRAILER SERIES



FLATBED  
SEMI-TRAILER SERIES



FRONT TOP  
SEMI-TRAILER SERIES

## 6.8M CURTAIN BOX TRANSPORTER TOP

### KEY FEATURES

Product Overview: Next-generation curtain box transporter

Design & Technology:

1. Novel structure, advanced manufacturing
2. Low center of gravity for stability

Modular Assembly:

1. Large-panel splicing design for rapid overseas assembly
2. Reduces transportation costs

Market Reception:

1. Enhanced regional adaptability
2. Trusted by customers for superior performance



### MAIN FEATURES

NOVEL DESIGN  
CONCEPT

HIGH-STRENGTH  
STEEL PRODUCTION

SMART MANUFAC-  
TURING

ELECTROSTATIC POWDER  
SPRAYING PROCESS

### Technical Specification

Type	6.8m curtain box top (without chassis)
Model	/
Curb weight	2800kg
Rated load capacity	8500Kg
Dimension(mm)	6800×2400×2300
Longitudinal beam configuration	Rectangular tube 140×80×6 / Q355B
Front wall board	Carbon steel welded front wall panel
back door	Carbon steel double door
baseboard	22mm wood floor
Side curtain cloth	Mobile column side roll type (all columns can be disassembled)
Roof	Slide to open the curtain cloth
Box volume	33m <sup>3</sup>
Circuit system	Factory standard LED
Painting Process	electrostatic powder spraying
Paint film color	/

## COMPRESSION REFUSE VEHICLE UPPER BOX

**Loading Capacity:** 6 m<sup>3</sup> (~3 tons, varies by waste type)

**Material:** High-quality manganese steel (Wugang), 4mm side/4mm bottom

**Application:** Domestic waste handling

**Main Components:** Sealed garbage bin, filler, shovel, hydraulic system, electrical control system

**Technical Features:**

1. Fully enclosed design
2. Electro-hydraulic integration
3. Automated operations (dumping, crushing, compacting, filling)

**Pollution Control:** Compressed sewage collected in a tank to prevent secondary pollution

**Optional Configurations:**

1. Lifting Mechanisms: Standard steel bin (300L), plastic bins (120/240/660L)
2. Additional Attachments: Pneumatic cover, triangular bucket, large floor bucket, swing-arm bin

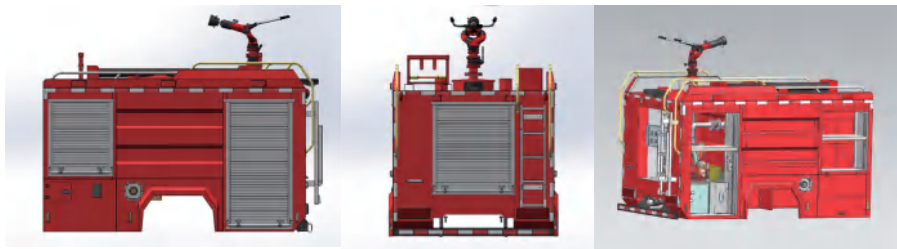
Disposition	
Effective volume (m3)	6m3
Box shape	Arc
Compression ratio	≥2.5
Time of filling cycle once	≤25s
Time to discharge garbage	≤45s
Operation mode	Can bus control system
Flip mechanism	Standard 2 240L flip mechanism. Multiple working devices are available



## WATER TANK FIRE TRUCK UPPER ASSEMBLY

### PRODUCT INTRODUCTION

The water tank/foam fire truck adopts the Qingling QL110ANKAY 4X2 special chassis. The equipment has reliable performance, applicable functions, and convenient use. The equipment control system adopts an electrical control system, and an operation control panel is set in the pump room. The buttons and switches are humanized and easy to operate.



### PARAMETERS CONFIGURATION

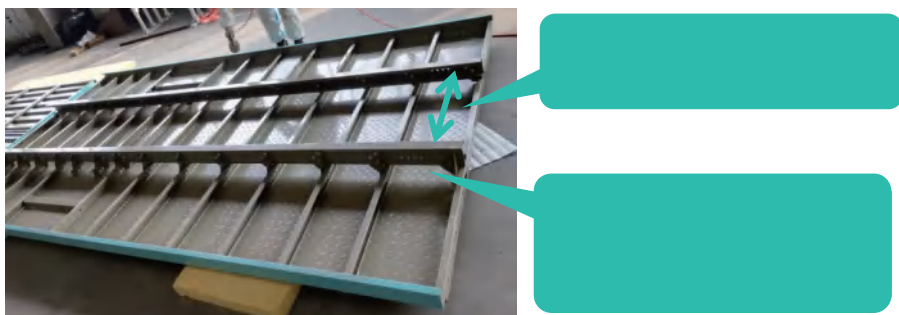
No.	Items	Water tank fire fighting	Foam fire fighting
1	Overall dimensions (mm)	7025x2300x3050	7025x2300x3050
2	Chassis model	Qingling QL1110ANKAY4X2	Qingling QL1110ANKAY4X2
3	Wheelbase (mm)	3815	3815
4	Engine model	ISUZU 4HK1-TCG61	ISUZU 4HK1-TCG61
5	Engine power/horsepower	139kw 190hp	139kw 190hp
6	Occupants (including driver) (person)	Restructured double row 3+3 people	Restructured double row 3+3 people
7	Fire extinguishing agent capacity (kg)	Water≥3450	Water≥2600Foam≥833
8	Fire pump flow	Atmospheric pressure pump 40L/s@1.0MPa	Atmospheric pressure pump 40L/s@1.0MPa
9	Fire cannon flow, range	40L/s@1.0MPa water≥65m	32L/s@0.8MPa Water≥60m Foam≥48m

## MODULAR CORRUGATED PANEL VAN (STEEL FLATBED VAN)

### PRODUCT INTRODUCTION

Our corrugated panel vans feature high-strength roll-formed integrated steel structures, offering lightweight yet robust solutions.

Left/right 4-door, double/single side doors, or doorless designs. Baseplate options: Lightweight integrated panels, flat steel plates, patterned steel plates, or bamboo composite panels.



### CKD (COMPLETELY KNOCKED DOWN) SOLUTION

Prefabricated components for rapid on-site assembly without welding or painting.

### ASSEMBLY PROCESS

Pre-production: Standardized parts manufactured and shipped.

Modular assembly: Riveted and bolted "building block" method for fast integration.

### CKD ADVANTAGES

Multi-site production: Reduces logistics costs.

Eco-friendly: Eliminates welding fumes, suitable for corrugated and steel flat panels.

Compact transport: Disassembled modules reduce volume by 50%.

### MANUFACTURING EXCELLENCE

MATERIAL RELIABILITY

AUTOMATED WELDING

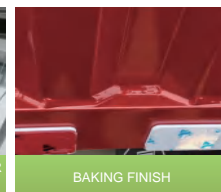
COACH-CLASS E-COATING

MODULAR ASSEMBLY

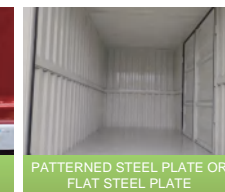
### KEY FEATURES



FULL CHAMBER OR 6 MODULAR  
ELECTROPHORESIS



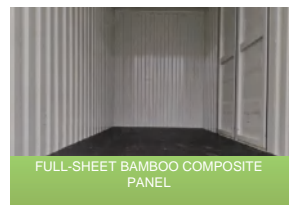
BAKING FINISH



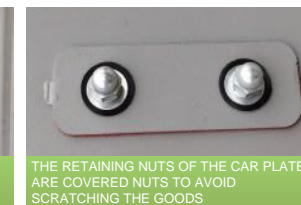
PATTERNED STEEL PLATE OR  
FLAT STEEL PLATE



LIGHTWEIGHT INTEGRATED  
PANEL



FULL-SHEET BAMBOO COMPOSITE  
PANEL



THE RETAINING NUTS OF THE CAR PLATE  
ARE COVERED NUTS TO AVOID  
SCRATCHING THE GOODS



THE INTERNAL CIRCUIT IS CONCEALED,  
WHICH IMPROVES THE SAFETY AND  
AESTHETICS

# REFRIGERATED VAN

## PRODUCT INTRODUCTION

Key Features:

Sealed Insulated Panels – Lightweight, corrosion-resistant, and highly durable.

Composite Surface – Smooth, paint-free finish for easy maintenance and branding.

High-Strength Bonding – Fused panels prevent thermal bridging.

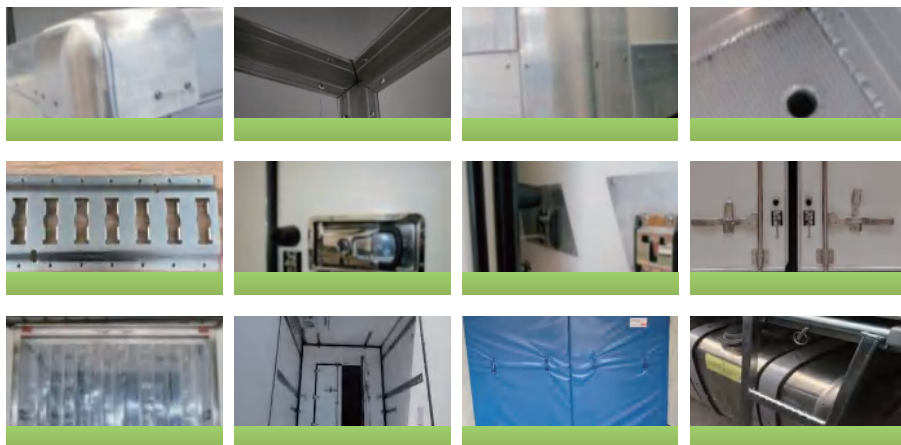
Reinforced Baseplate – Anti-corrosion plywood with steel crossbeams for impact resistance.

Flexible Design – Optional side doors and multi-temperature zones.

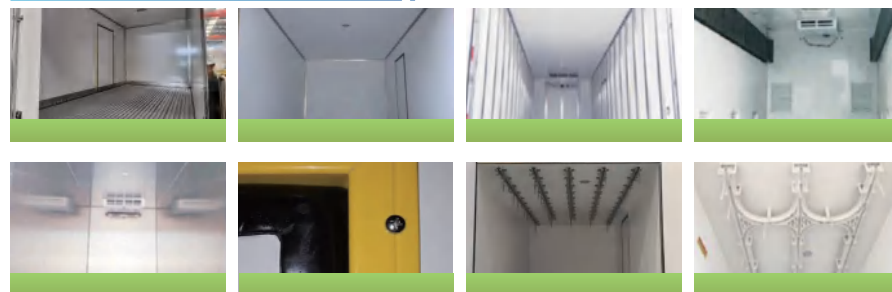
Customizable Interior – Racks, cargo anchors, and meat suspension systems available.



## CUSTOMIZABLE FEATURES



## INTERIOR CONFIGURATIONS



## STRUCTURAL HIGHLIGHTS

1. Sealed Insulated Panels- Lightweight, corrosion-resistant, and highly durable.
2. Smooth Composite Surface - Paint-free, easy to maintain, and ideal for branding.
3. High-Strength Bonding - Heat-pressed panels prevent thermal bridging.
4. Reinforced Baseplate - Anti-corrosion plywood with steel crossbeams for strength.
5. Flexible Design-Optional side doors and multi-temperature zones.
6. Custom Interior - Adjustable racks, cargo anchors, and meat suspension systems.



# AMBULANCE



## Short-axis Transport Ambulance

Basic technical parameters of the vehicle

Chassis model	SH6521J2DB
Body size (mm)	5180×2062×2520
Medical bin size (mm)	2530×1810×1820
gross mass (kg)	3550
curb weight (kg)	2525
engine type	SC20M150.1Q6
Fuel types	diesel oil
fuel tank capacity (L)	80
power (kw)	110
displacement (ml)	1996
Intake form	Compression ignition type four-stroke, direct injection
cylinder	4 / Indirect
effluent standard	The GB17691-2018 countries
wheel base (mm)	3000
wheel base (mm)	1734/1756
Front suspension / rear suspension (mm)	1020/1160,1020/1410
Drive way	4 * 2 Front-wheel drive
gear-box	6 Fighter manual
Top vehicle speed (km/h)	160
tyre size	215/75R16LT,215/75R16C
Rated passenger capacity (person)	9
Side sliding door form	hand movement
Key type	remote key
Central control lock in the car	configure
ABS anti-lock	configure

# SMART LIVING CAPSULE



# SMART LIVING CAPSULE

## PRODUCT INTRODUCTION

Core Strengths:

1. Advanced product design & manufacturing
2. Innovative service solutions

Modular Flexibility:

1. Functional modules: Travel | Business | Postal Stations
2. Configurations: Single-unit or modular assembly

Multi-Scenario Applications:

1. Tourist attractions | Campsites | Smart Cities

End-to-End Solutions:

1. Full-cycle support: Planning → Design → Financing → Construction → Operation
2. Customizable for diverse needs

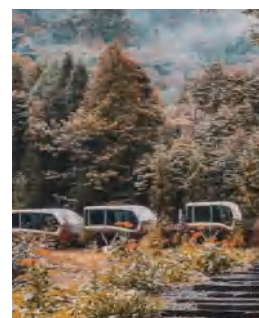


## PRODUCT ADVANTAGES

1. Modular process structure, providing multiple combination modes
2. High-speed rail quality assurance, service life greater than 10 years
3. Panoramic hollow silver-plated explosion-proof glass, taking into account both viewing and heat preservation
4. RV design concept, professional car factory production line customization
5. Unique streamlined design, an eye-catching check-in spot for internet celebrities
6. Spacious interior space to meet the needs of different scenarios
7. Intelligent management system, unique high-tech experience



## PRODUCT APPLICATION SCENARIOS



Scenic spots,  
campsites, etc.



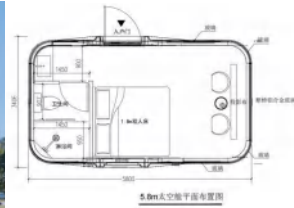
Rural



Smart City

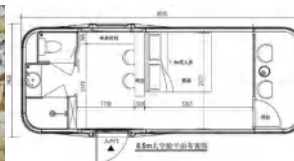
## CONFIGURATION LIST

### THE ERA-05 CAPSULE CONFIGURATION LIST



Dimensions:5800x3400x3240mm  
 Building area:19.72m<sup>2</sup>  
 Number of occupants:1-2  
 Total power consumption:10KW  
 Total net weight:4  
 Unit type:1 bedrooms 1 bathroom

### THE ERA-06 CAPSULE CONFIGURATION LIST



Number of occupants:1-2  
 Total power consumption:10KW  
 Total net weight:6  
 Unit type:one bedrooms, one bath and one balcony

### THE ERA-07 CAPSULE CONFIGURATION LIST



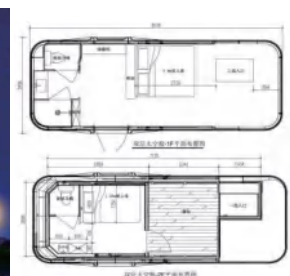
Dimensions:8900x3400x3240mm  
 Building area:28.90m<sup>2</sup>  
 Number of occupants:1-2  
 Total power consumption:10KW  
 Total net weight:7  
 Unit type:two one bedrooms one bath

### THE ERA-08 CAPSULE CONFIGURATION LIST



Dimensions:11500x3400x3240mm  
 Building area:32.10m<sup>2</sup>  
 Number of occupants:2-4  
 Total power consumption:10KW  
 Total net weight:8  
 Unit type:two bedrooms, one bath and one balcony

### THE ERA-10 CAPSULE CONFIGURATION LIST



Dimensions:8500x3400x3240mm Building area:46.5m<sup>2</sup> Number of occupants:1-2  
 Total power consumption:10KW Total net weight:10  
 Unit type:two bedrooms, two bath and two balcony

# INTELLIGENT SYSTEM



## BOTTLE RECYCLING MACHINE (IN DOORVER)



### Technical parameters

Dimensions (mm)	1007*833*1947
Slot size (mm)	Φ125
Box steel plate thickness (mm)	1.2+
Thickness at reinforcement position (mm)	1.5+
Thickness at key stress position (mm)	2.0+
Overall maximum capacity (L)	660
Packaging standards	Wooden box

### Product introduction

Designed to collect PET bottles, cans and glass bottles, all in one machine. With its small footprint it is suitable for convenient stores, small supermarkets or collection points like pharmacies or schools.

## BOTTLE RECYCLING MACHINE (OUT DOORVER)



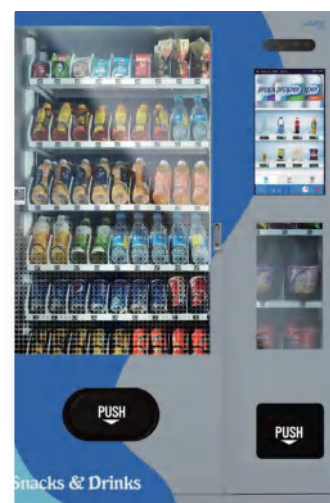
### Technical parameters

Dimensions (mm)	1398*1000*2189
Slot size (mm)	Φ125
Box steel plate thickness (mm)	1.0+
Thickness at reinforcement position (mm)	1.2+
Thickness at key stress position (mm)	5.0+
Overall maximum capacity (L)	620
Packaging standards	Wooden box

### Product introduction

The bottle recycling machine (outdoor ver.) is perfect for businesses that have multiple waste streams because the machine holds a capacity for aluminium cans and plastic bottles.

## LANTIN VM



### Standard configuration details

Apple pay	Android chip	Refrigeration
Double layer high-strength glass	Waterproof	Piral rack
Empty barrel warning light	Anti-pinch	Anti-leakage
Cigarette extinguishing	Slot lighting	Card payment
Dimension(mm): 1930(H) x 1280(W) x 830(D)		

### Product introduction

VM make it easier than ever to redeem your reward points for your favorite beverages.

Blind box VM selling eco-friendly cultural and creative blind boxes offers customers surprise items with a focus on sustainability and unique, environmentally themed products.

## SMART RECYCLING HUB



### Standard configuration details

7-inch screen	Intelligent ventilation module	Temperature detection module
Anti-leakage	Anti-pinch	Digital weighing module
Full barrel warning light	Slot light	Anti-cheat function
Full barrel reminder	Door open indicator	

### Product introduction

This kiosk is used to collect recyclables like paper, plastic, metal and glass. There is weighing module inside to measure the weight of garbage and report to the management system. Equipped with the identification module by face recognition and QR scanning, which makes it easier for user dispose of garbage. And the identifier system can trace the source of the garbage. And it offers the overflow alarm, temperature test and automatic fire extinguishing.

# BATTERY THERMAL MANAGEMENT SYSTEM

## BATTERY THERMAL MANAGEMENT SYSTEM APPLICATIONS

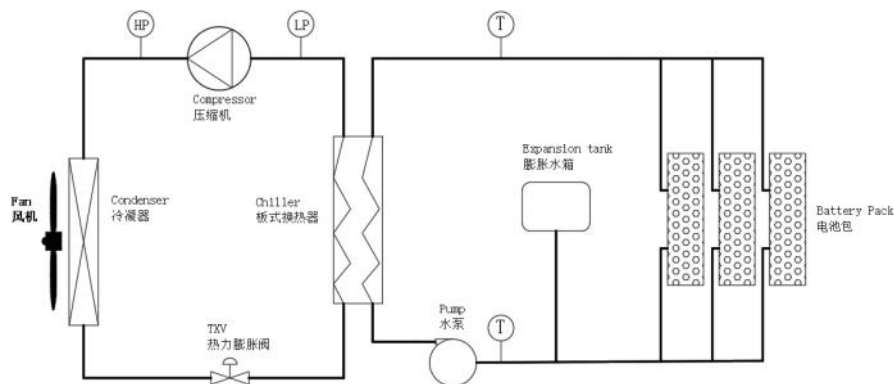


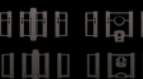
The Battery Thermal Management System is a complete thermal system solution that maintains the critical operating temperature range of a vehicle's battery.

**Product Parameter Table (Model: TMS-L5-L01)**

Item	Content	Item	Content
Environmental temperature	0-45 °C	Refrigerants	R134a
High voltage	540 VDC	Filling capacity	310±10g
High voltage range	400-750 VDC	Coolant Type	50%aqueous solution of ethylene glycol
Low voltage	24 VDC	Coolant flow	15L/min@110kPa
Low voltage range	18-32 VDC	Noise level	≤78 dB(A)
Communication method	CAN	Protection class (electrical parts)	IP67
Baud	250kbps (optional)	Overall dimensions	L522mm*W465mm*H401mm
Cooling capacity	5kW@40 °C	Weights	31kg
Electric power	2.5kW	Control logic	The unit works automatically when the whole vehicle is given the target water temperature

## BATTERY THERMAL MANAGEMENT SYSTEM SCHEMATIC





## INDEPENDENT SUSPENSION FRONT AXLE--2.7T

### FEATURES AND COMPETITIVE ANALYSIS INTRODUCTION

- 1.High Reliability – Durable gears with extended fatigue life.
- 2.High Efficiency – Optimized transmission system with precision gears, bearings, and low-resistance seals, achieving up to 96.5% efficiency, exceeding industry standards.
- 3.Compact Structure – Integrated motor, differential, and reducer for a modular, space-saving design with coaxial input and output.
- 4.Lower Energy Consumption – Reduces axle mass imbalance and transmission losses, improving vehicle efficiency.



#### Suspension parameters

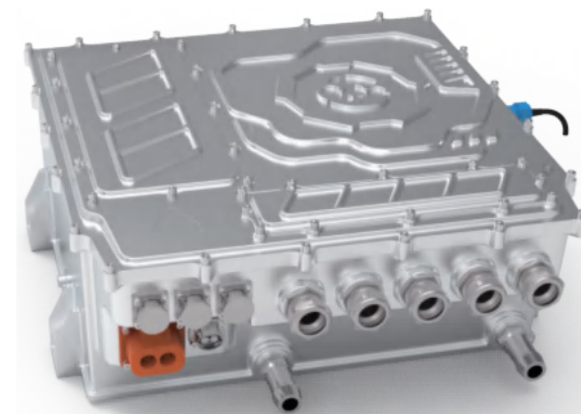
Rated Load (KG)	2700
Rim Specification/Tire Specification	215/75R16LT
Wheel Bolt/Pitch Circle Diameter (mm)	6-M12*1.5/ $\varnothing$ 139.7
Kingpin Inclination Angle/Wheel Camber Angle (°)	9.5°±0.5°/1°±0.5°
Kingpin Caster Angle (°)	3.4°±0.7°
Wheel Inner Steering Angle/Outer Steering Angle (°)	44°/33°
Brake Specification/Brake Type	2-54/Hydraulic disc brake
ABS Configuration	Ring Gear, 100 Teeth
Vertical Travel (mm)	-1
Toe-in	0-3mm
Positioning Flange (mm)	$\varnothing$ 106
Speed Ratio	12.9

#### Motor parameters

Motor Maximum Power (KW)	100
Motor Rated Power (KW)	50
Motor Peak Torque (N.m)	280
Motor Rated Torque (N.m)	126
Motor Rated Speed (Rpm)	12000
Motor Maximum Speed (Rpm)	3800
Motor Rated Voltage (VDC)	360
Insulation Class	H
Protection Class	IP67
Cooling/Flow Rate (L/Min)	Water Cool/20
Motor Weight (KG)	62

## INTEGRATED MOTOR CONTROLLER

This integrated controller can simultaneously provide functions such as driving, power distribution, steering oil pump, air compressor, DC, and vehicle control, simplifying vehicle design, debugging, and installation, and offers high cost-effectiveness. It can be customized with relevant functions according to customer needs.



#### IMC615A IMC620A IMC625A

Function Integration	Driving、Power Distribution、Oil Pump、Air Compressor、DC
Rated Input Voltage	540 ~ 610VDC
Output Current	Driving: 150A/300A 200A/400A 250A/480A Auxiliary drive: Rated 13A, Peak 25A DC: 110A(27.5VDC)
Compatible Motor Rated Power	Compatible with 45~120kW drive motors Compatible with 1.5~5.5kW oil pumps/air pumps, 3kW DC
Operating Temperature	-40 ~ 65℃
Cooling Method	Water Cooling
Weight	30kg
Protection Class	IP68
Dimensions	511*520*220mm
Others	Optional vehicle control function available

# OIL-FREE SCROLL AIR COMPRESSOR

## PRODUCT INTRODUCTION

The full range of oil-free scroll air compressors meets various needs in commercial vehicles and rail transit, including braking, pneumatic suspension, oxygen supply, and intelligent pneumatic seats. Compared to traditional air compressors, oil-free scroll air compressors offer significant advantages such as true oil-free operation, high efficiency, low vibration, high reliability, low noise, and maintenance-free operation.

1.5 kW direct connection



2.2 kW coaxial version



3.7kw, 5.5kw volute version

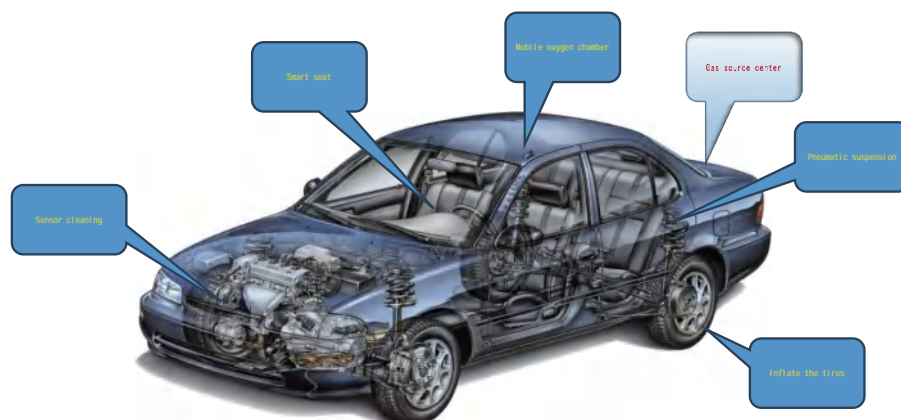


3.7 kw, 5.5kw



Vehicle: flow rate from 120L/Min to 500L/min, 8 basic models and more than 20 extended models have been developed to meet the needs of commercial new energy vehicles for braking and pneumatic suspension.

## FUTURE GAS SOURCE CENTER (VEHICLE-MOUNTED CENTRALIZED GAS SOURCE)



Type	Oil injection screw type	Oil injection slide type	Oil-free piston type	Oil free scroll
Product picture				
Noise	secondary	secondary	tal	small
Vibrate	secondary	secondary	tal	small
Service environment	-20~45 °C	-20~45 °C	-20~50 °C	-40~65 °C
Gas quality	Contains trace amounts of oil Easy to run on oil	Contains trace amounts of oil Easy to run out of oil	The piston rings are prone to wear	Totally oil-free
Reliability	Lubricating oil is easily emulsified High temperature jump	Lubricating oil is easily emulsified High temperature jump	Many moving parts Wear is high	Simple structure and smooth operation No lubricating oil emulsification risk
Maintenance cycle / 2500 hours per year	Check the oil mirror regularly Replace the air filter Replace the oil filter Change the lubricating oil	The oil mirror needs to be checked regularly and the air filter needs to be replaced Change oil filter and lubricating oil	Replace the air filter Replace piston rings, valves, etc. several times	Replace the air filter Replace seals as needed

## FEATURES

ITS REALLY OIL-FREE

HIGH EFFICIENCY

LOW VIBRATION

HIGH RELIABILITY

LOW NOISE

MAINTENANCE-FREE

EVM



Singapore, Malaysia