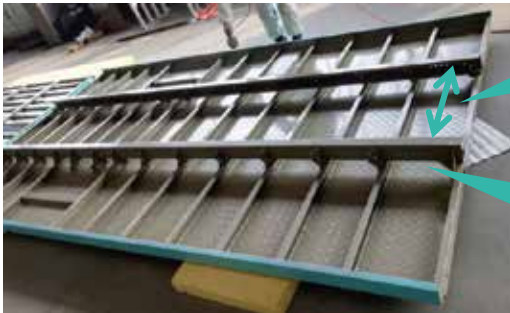


MODULAR CORRUGATED PANEL VAN (STEEL FLATBED VAN)

PRODUCT INTRODUCTION

Our corrugated panel vans feature high-strength roll-formed integrated steel structures, offering lightweight yet robust solutions.

Left/right 4-door, double/single side doors, or doorless designs. Baseplate options: Lightweight integrated panels, flat steel plates, patterned steel plates, or bamboo composite panels.



The width of the longitudinal beam of the carriage can be flexibly matched to the width of the different chassis girder.

The longitudinal beam and cross beam are connected by bolts, and the torsional resistance is better than the traditional welded frame structure. Reduce welded joints, reduce the risk of stress concentration, and extend service life.

CKD (COMPLETELY KNOCKED DOWN) SOLUTION

Prefabricated components for rapid on-site assembly without welding or painting.

ASSEMBLY PROCESS

Pre-production: Standardized parts manufactured and shipped.

Modular assembly: Riveted and bolted "building block" method for fast integration.

CKD ADVANTAGES

Multi-site production: Reduces logistics costs.

Eco-friendly: Eliminates welding fumes, suitable for corrugated and steel flat panels.

Compact transport: Disassembled modules reduce volume by 50%.

MANUFACTURING EXCELLENCE

MATERIAL RELIABILITY

AUTOMATED WELDING

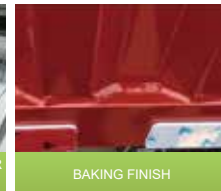
COACH-CLASS E-COATING

MODULAR ASSEMBLY

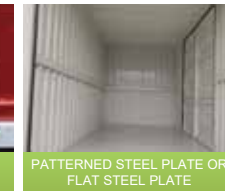
KEY FEATURES



FULL CHAMBER OR 6 MODULAR ELECTROPHORESIS



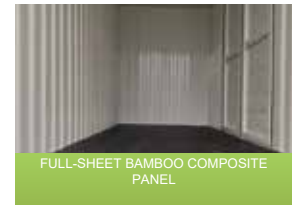
BAKING FINISH



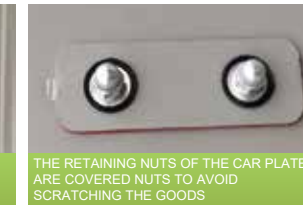
PATTERNED STEEL PLATE OR FLAT STEEL PLATE



LIGHTWEIGHT INTEGRATED PANEL



FULL-SHEET BAMBOO COMPOSITE PANEL



THE RETAINING NUTS OF THE CAR PLATE ARE COVERED NUTS TO AVOID SCRATCHING THE GOODS



THE INTERNAL CIRCUIT IS CONCEALED, WHICH IMPROVES THE SAFETY AND AESTHETICS